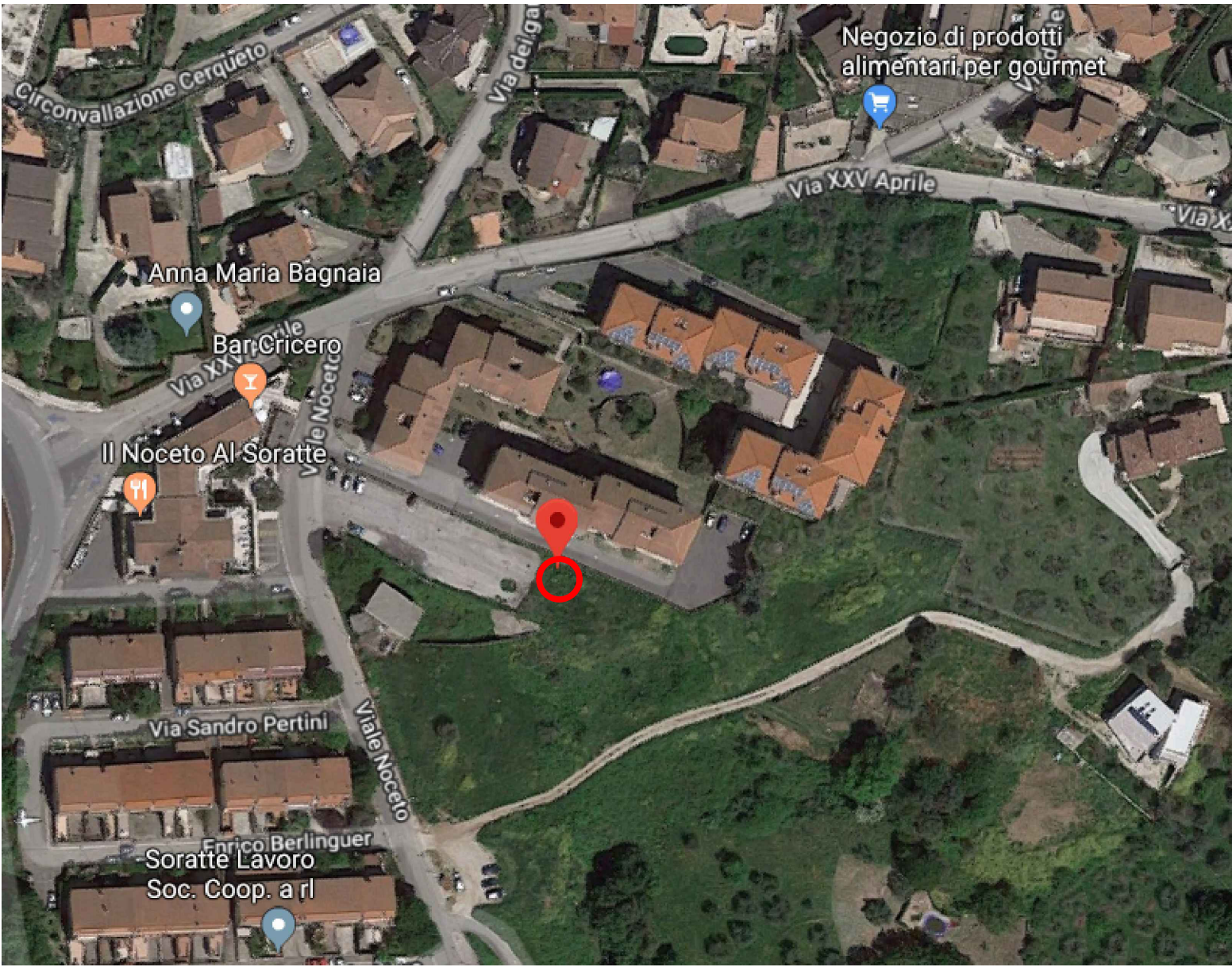


Ortofoto - area di interesse



P.T.P.R. Tav. A: Paesaggio Agrario di Rilevante Valore

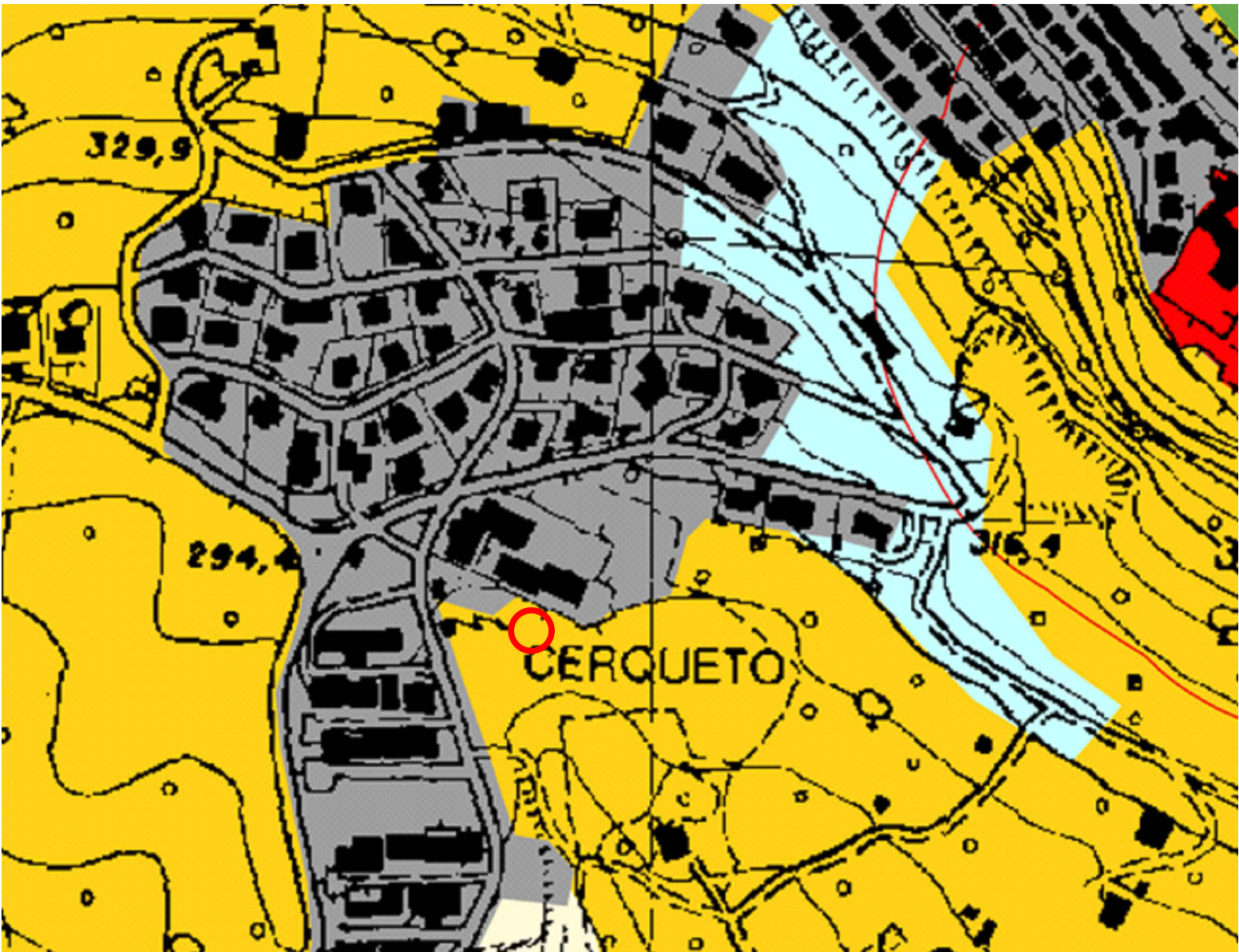
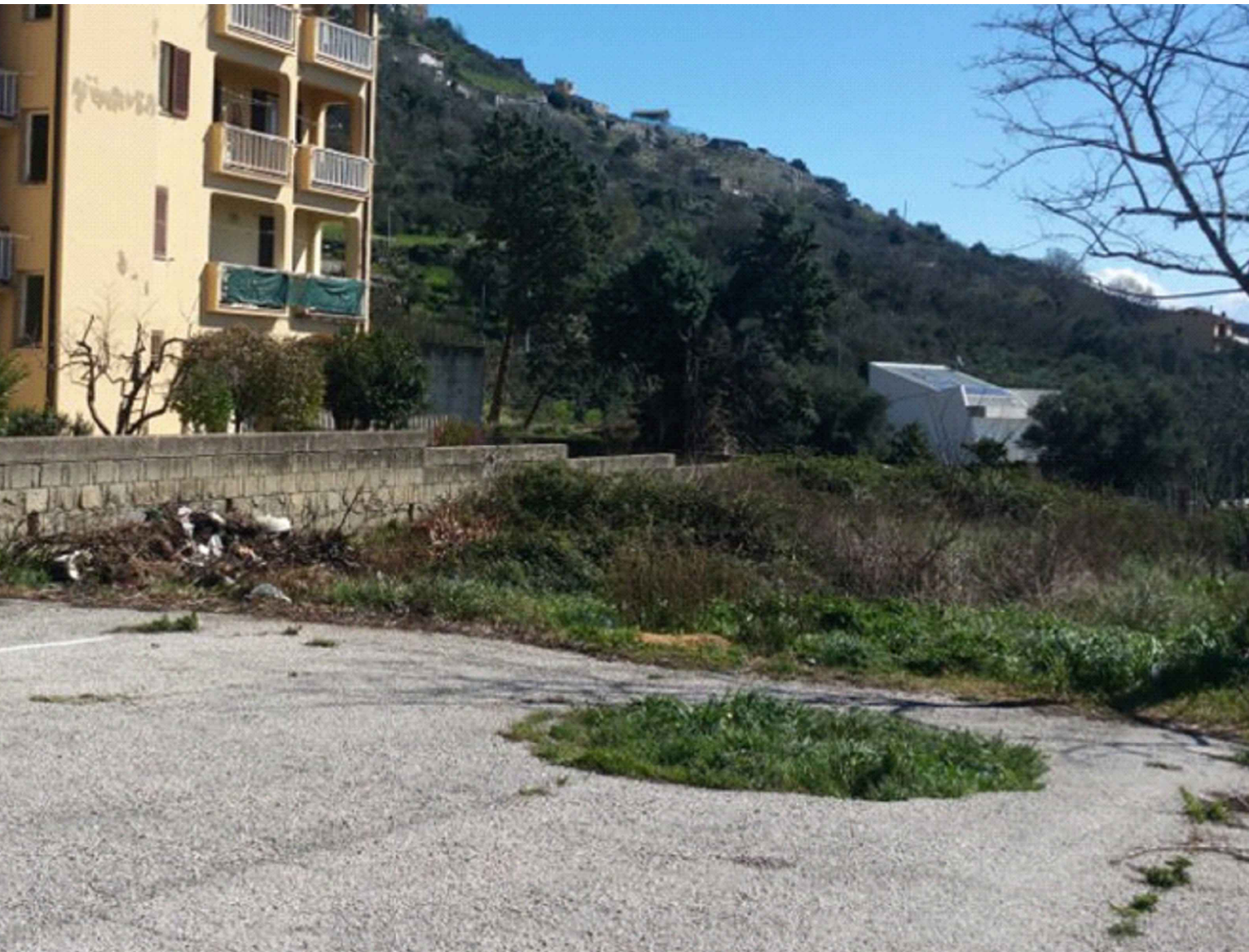
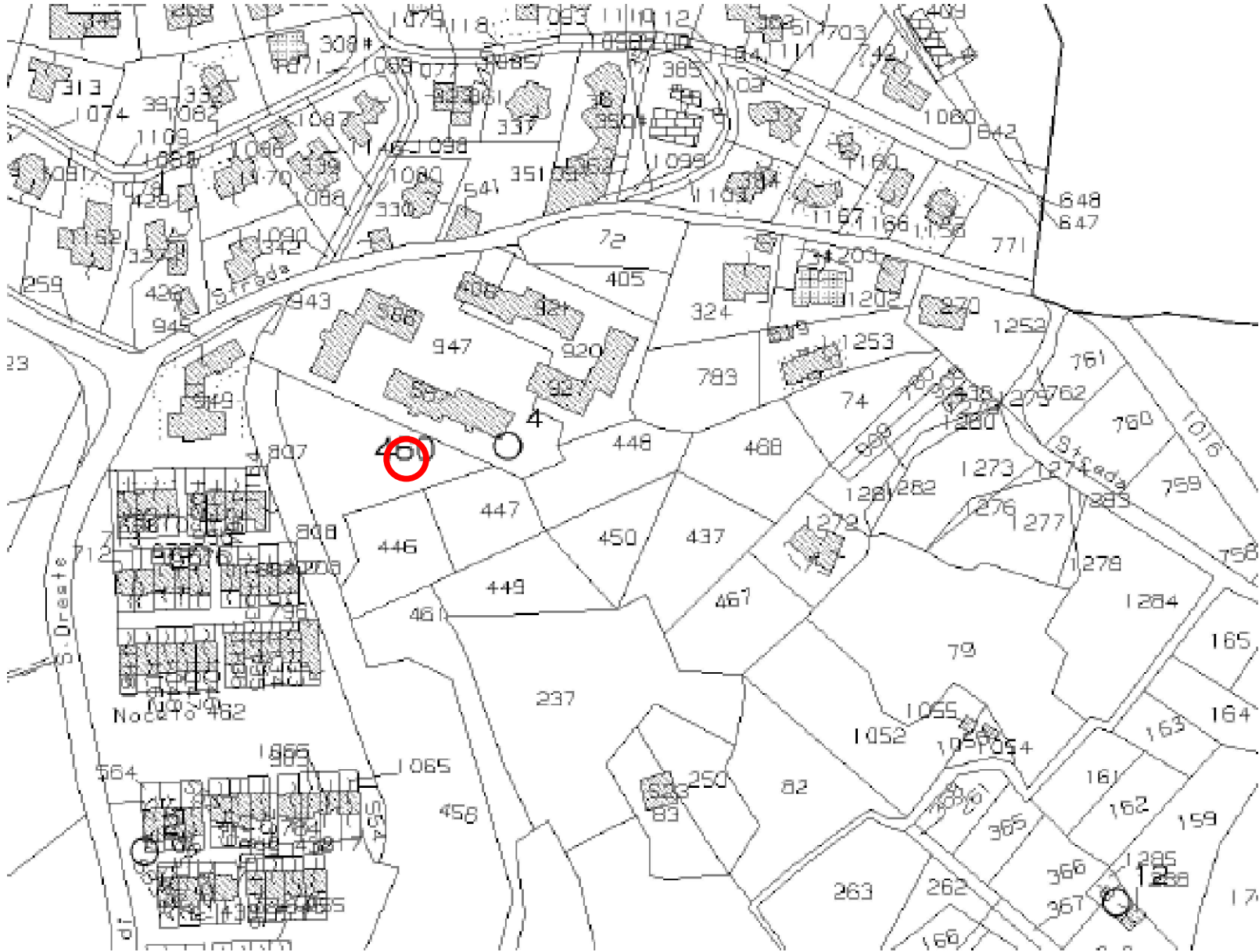


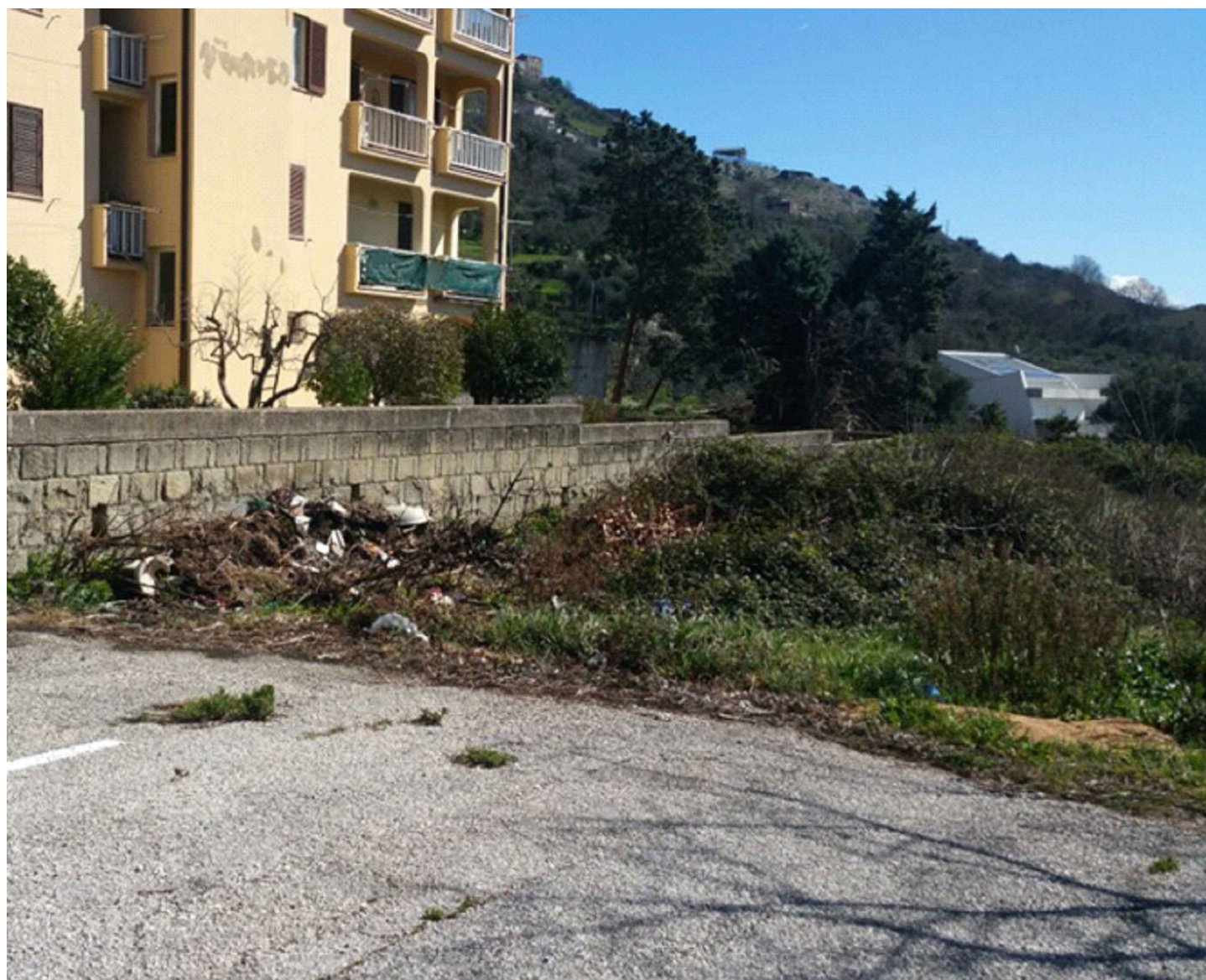
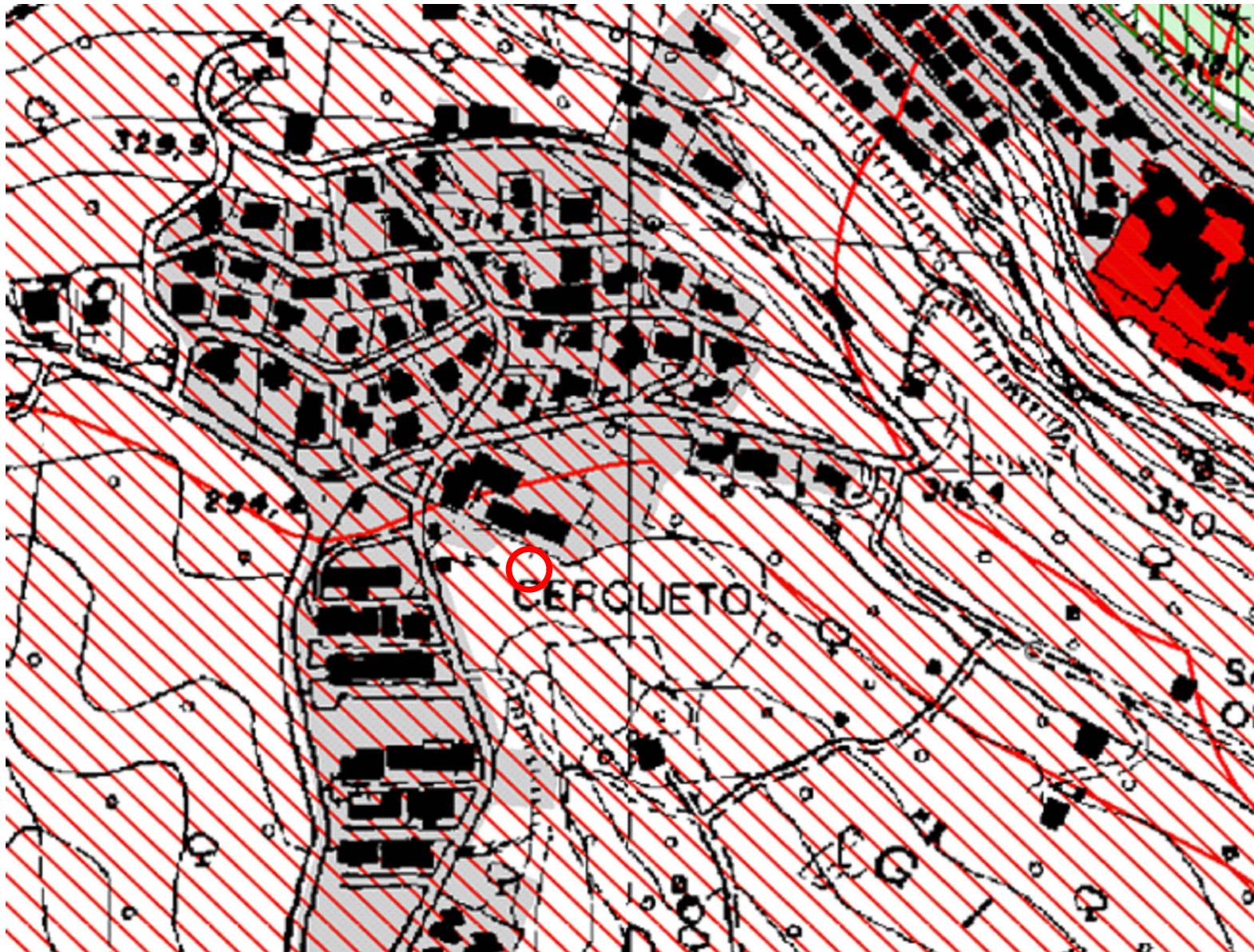
Foto Area Shelter



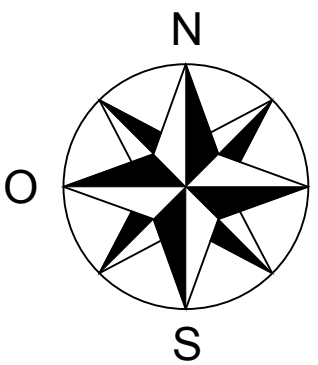
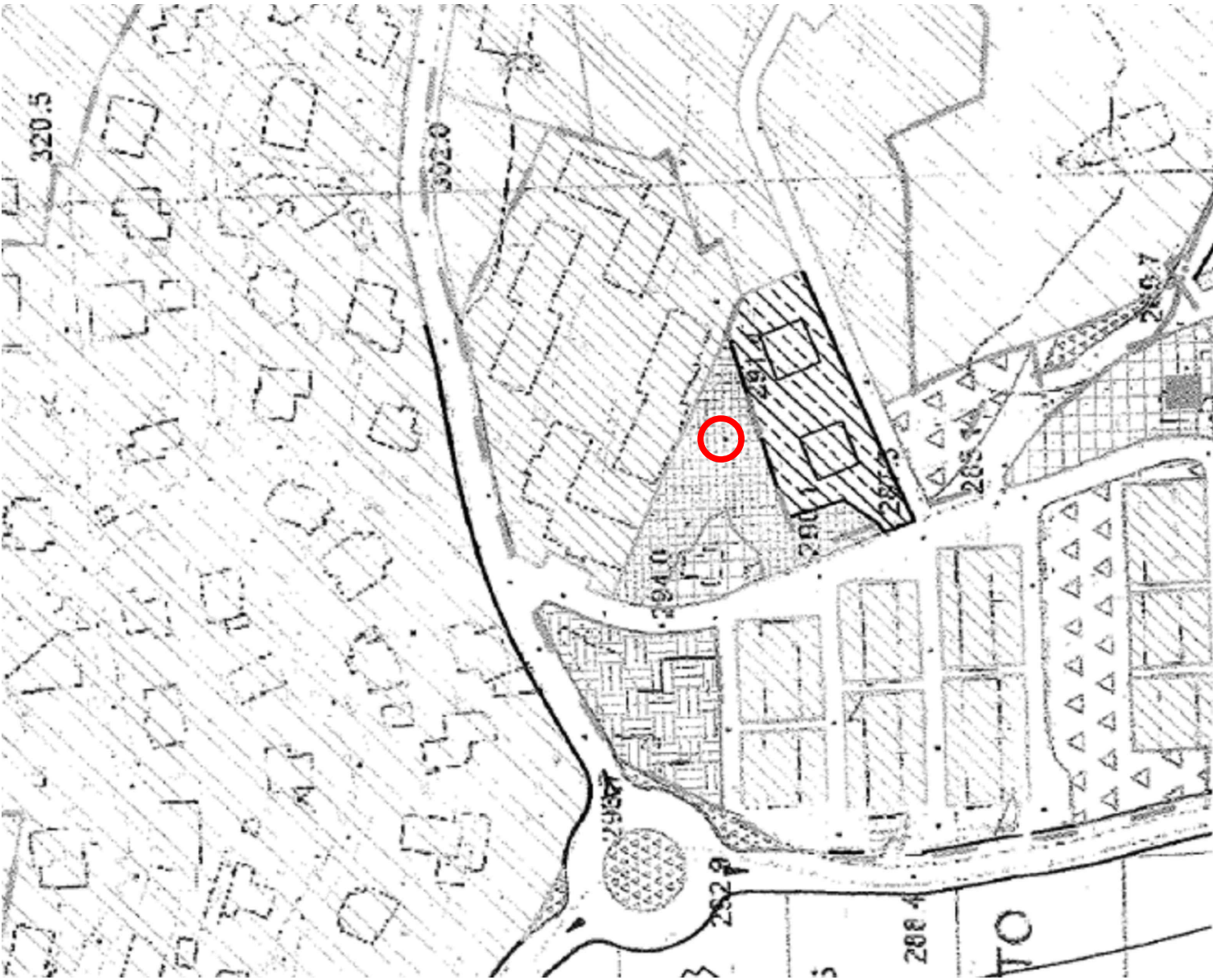
Stralcio Catastale



P.T.P.R. Tav. B: Beni d'insieme (c,d) - Valle del Tevere



P.R.G: Zona P - Parcheggi Pubblici



 ZONA INTERESSATA DALL'INTERVENTO

INVITALIA

Infratel Italia SpA

POSA IN OPERA DI UNO SHELTER
PER STAZIONE PCN FIBRA OTTICA

COMMITTENTE

INVITALIA

Infratel Italia SpA

VIALE AMERICA 201 - 00144 - ROMA

APPALTATORE

open fiber

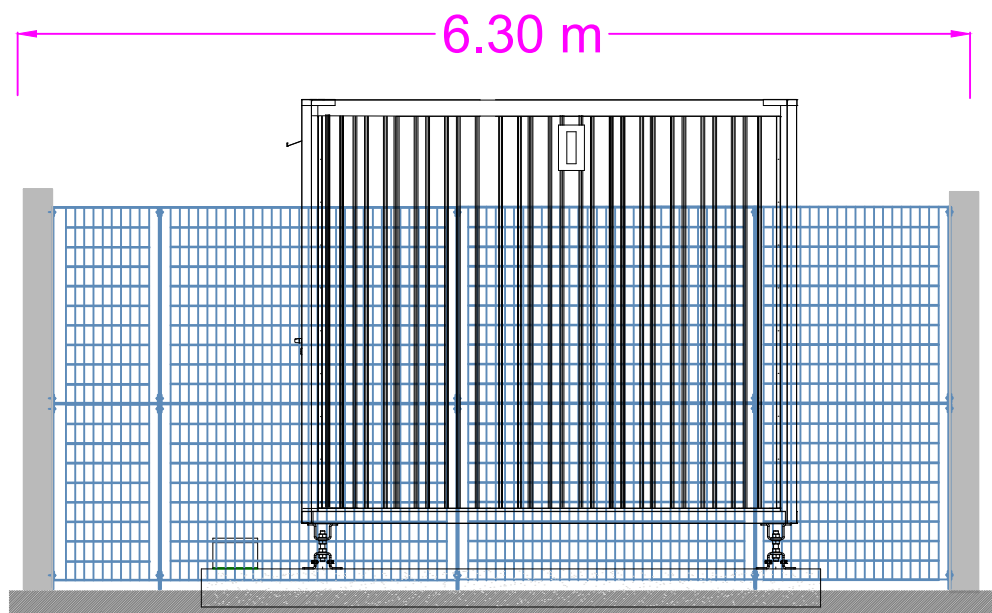
RESPONSABILE OPERATIONS: DOTT. ING. STEFANO PAGGI

PROGETTISTA

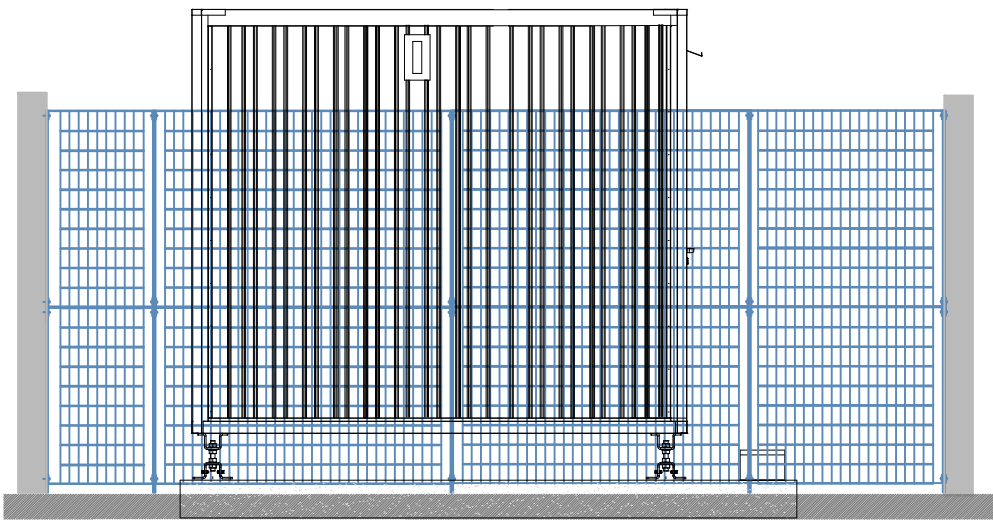
ITALTEL

ELABORATO		FORMATO	A1
COMUNE DI SANT'ORESTE INQUADRAMENTO CARTOGRAFICO E FOTO		REDDATTO	
		VERIFICATO	
		APPROVATO	
		DATA	03/2019
		SCALA	Codice Progetto LAZ3SANTORESTE00_PCN
REVISIONE	DATA	AGGIORNAMENTI	TAVOLA
01			ALLEGATO 1.1
02			
		NOME FILE	
		POP_RM_16_SANT'ORESTE	

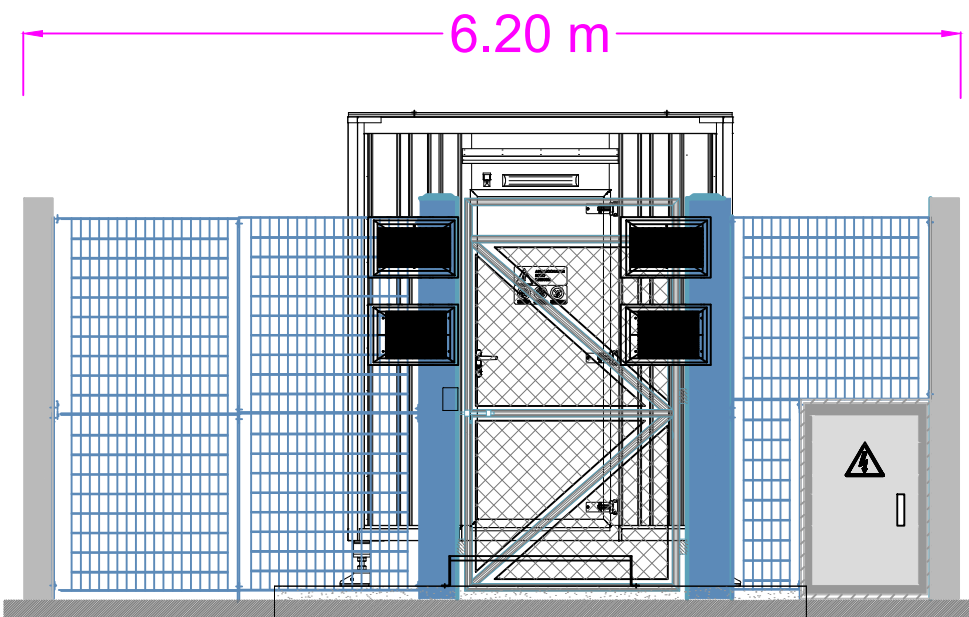
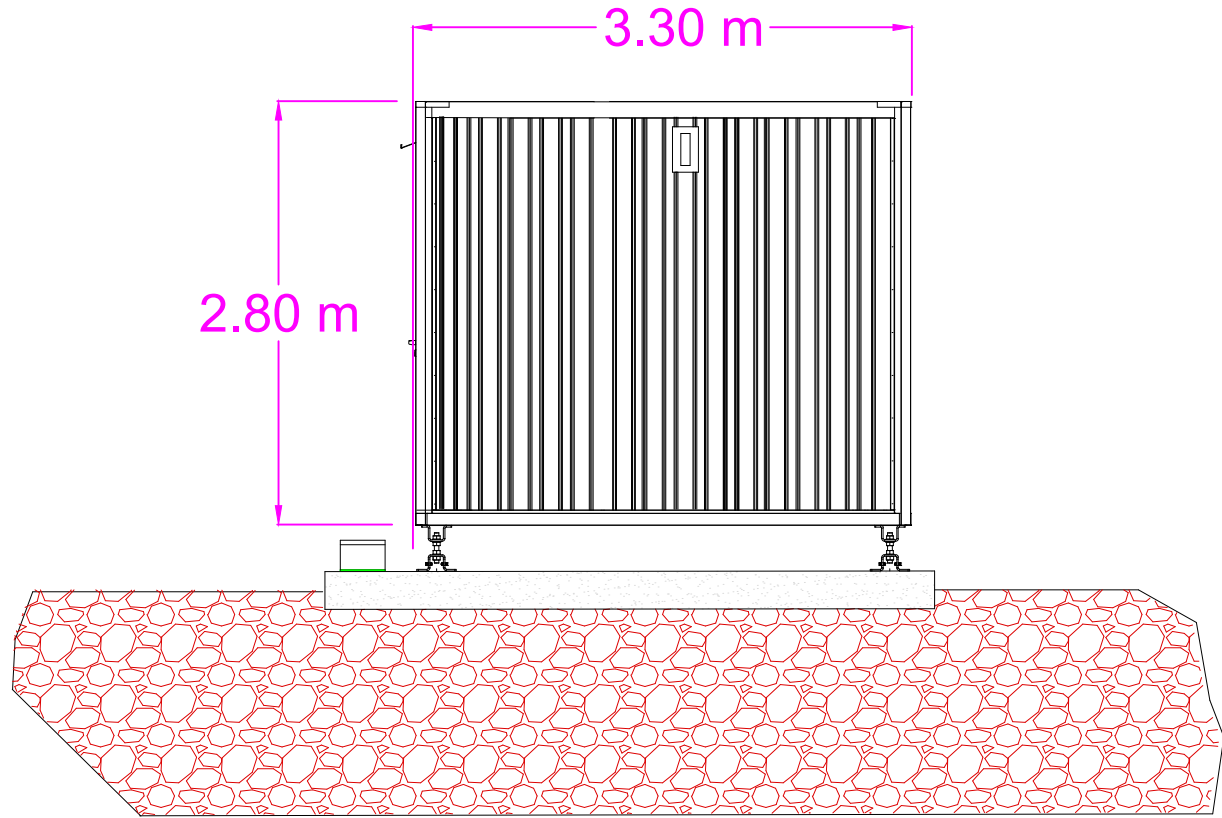
SH30 max 14 kUI area Interna di 7m²



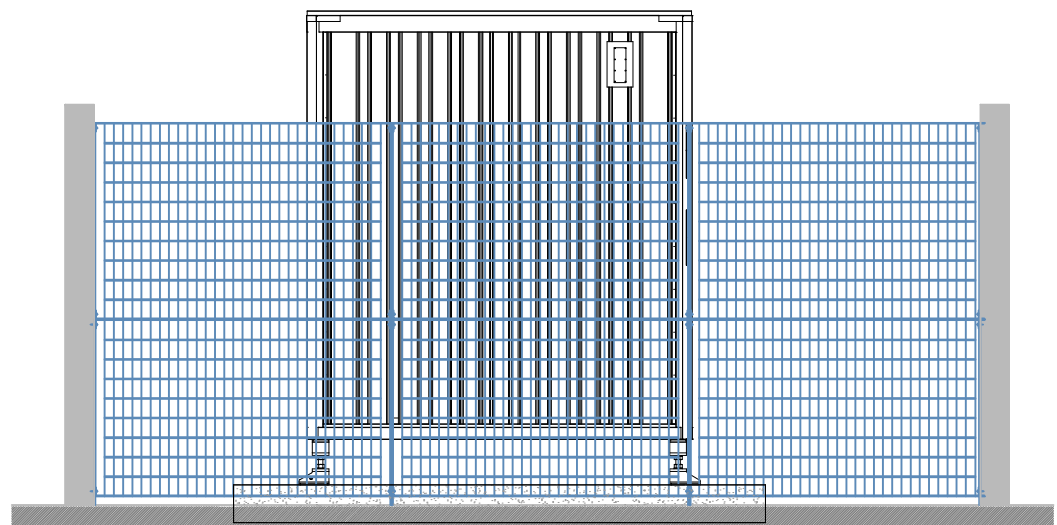
Vista Laterale Destra



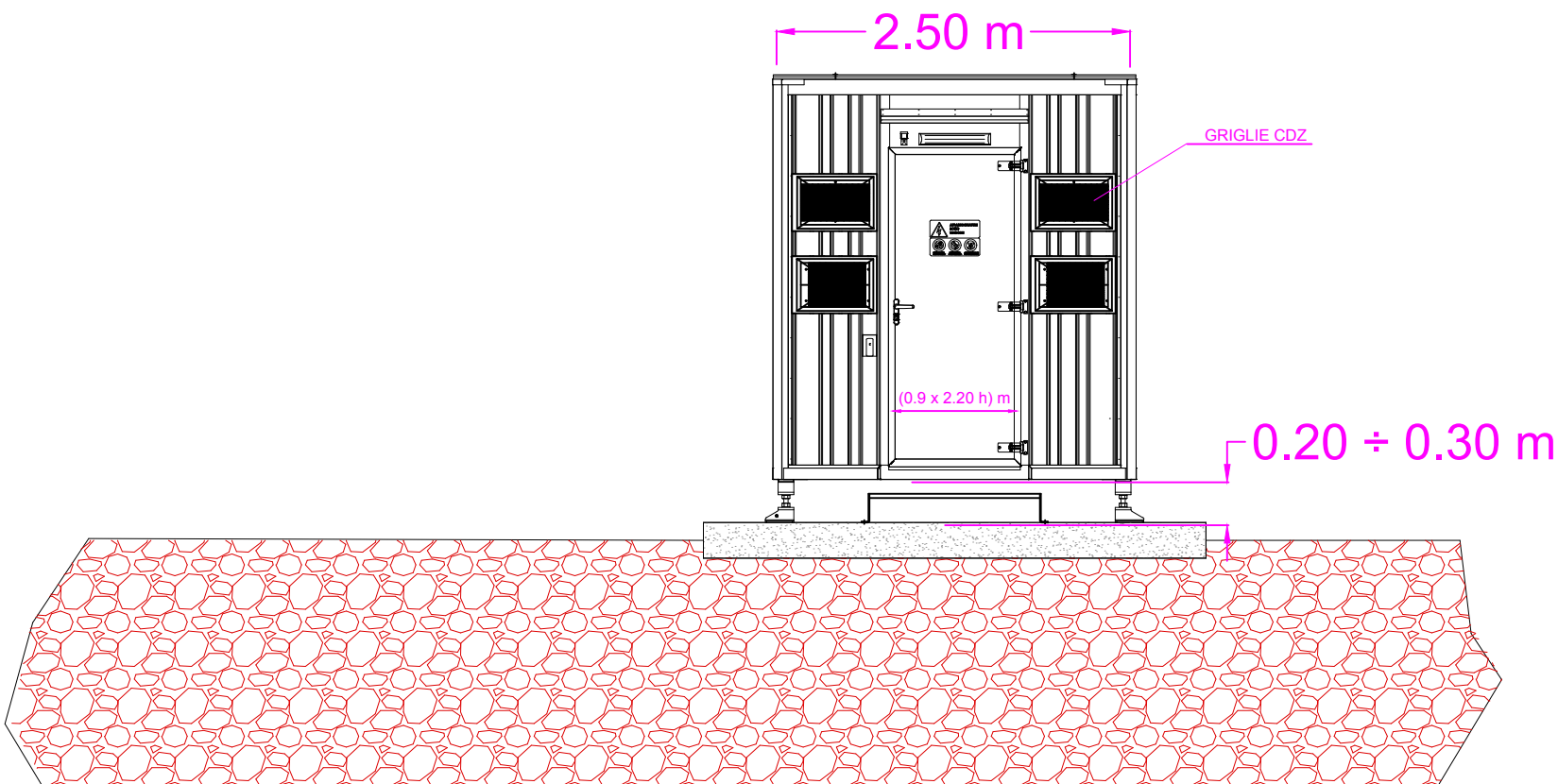
Vista Laterale Sinistra



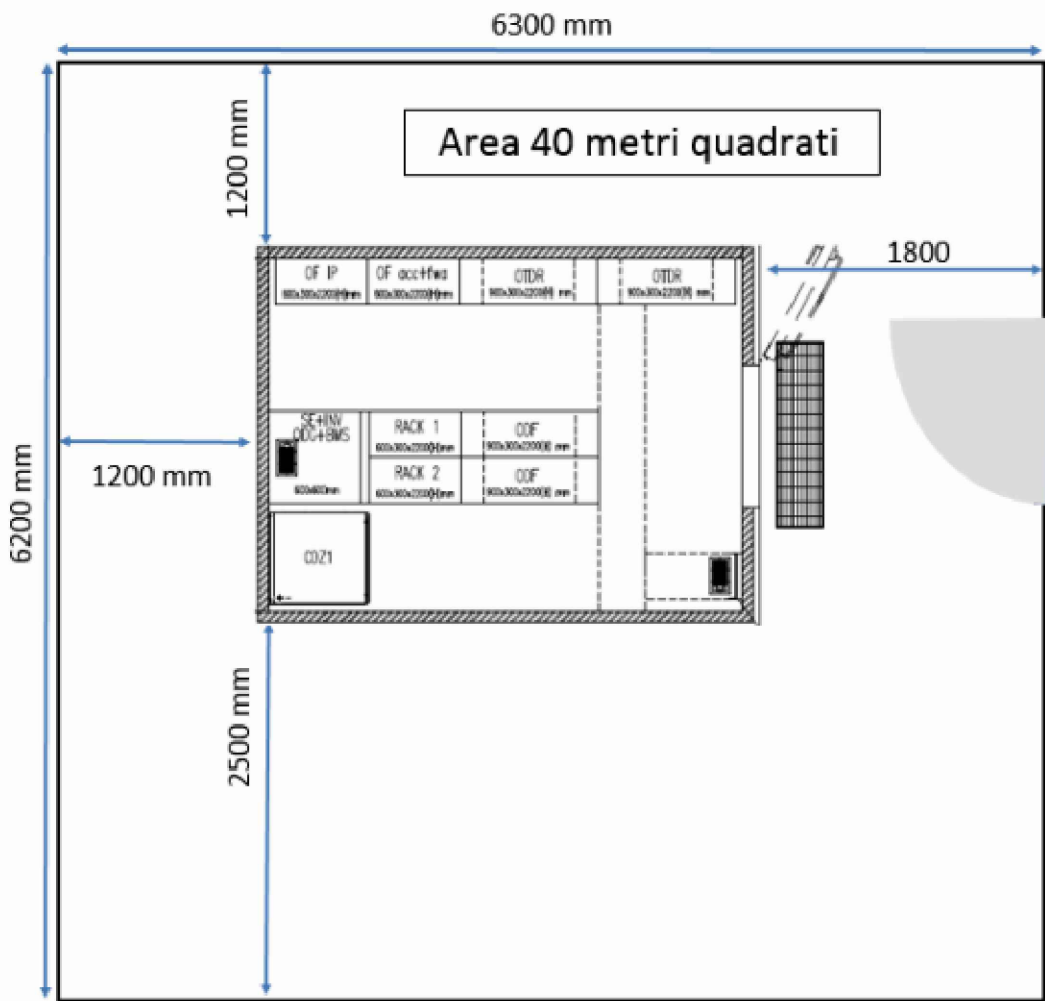
Vista Fronte



Vista Retro



Vista in pianta area di 40 m²



INVITALIA
Infratel Italia SpA

POSA IN OPERA DI UNO SHELTER
PER STAZIONE PCN FIBRA OTTICA

COMMITTENTE
INVITALIA
Infratel Italia SpA
VIALE AMERICA 201 - 00144 - ROMA

APPALTATORE
open fiber RESPONSABILE OPERATIONS: DOTT. ING. STEFANO PAGGI

PROGETTISTA
ITALTEL

ELABORATO		QUADRO GENERALE ALLEGATO 1.2 INSTALLAZIONE PCN SH30		FORMATO	A1
REDAITTO					
VERIFICATO					
APPROVATO					
DATA	03/2019			Codice Progetto	LAZ3SANTORESTE00_PCN
REVISIONE	DATA	AGGIORNAMENTI	SCALA	1:50	TAVOLA
01					
02			NOME FILE	POP_RM_16_SANTORESTE	ALLEGATO 1.2